

Master-SANTO L

Article Master No.: 000236

TPV transport and suction hose, lightweight, for increased temperatures



hydrolysis resistant



microbe resistant



flexible



light



moderately pressure resistant

Product Details

Construction / Material

- Type of construction: Profile extruded hose with metal spiral
- Spiral Design: made of steel wire
- Material of the spiral: Spring steel
- Execution of the wall: Wall thickness between the spirals approx. 0.7 mm
- Material of the wall: thermoplastic vulcanizate (TPV)

Properties

- Specifications of the product: according to TRGS 727 and ATEX 2014/34 EU
- Chemical Properties: good resistance to chemicals, halogen-free, good UV resistance, good resistance to acids, good resistance to alkaline solutions, good resistance to solvent vapours, good ozone resistance, plasticiser-free
- Flexibility: flexible
- Weight: light
- Pressure Resistance: moderately pressure resistant
- Colour: black

Operating Temperature

- Temperature Range: -40 - 130

- short-term maximum temperature: peaks to 150 °C

Delivery Information

- Delivery, type of production: Various nominal widths in standard lengths are available ex-production, individual nominal widths and lengths also ex-stock

Application Areas

- Areas of application: Automotive, Plant & Mechanical Engineering, Industry, Semiconductor Industry, Ventilation & air-conditioning, Energy Technology, Bulk & Construction, Sea & rail transport, Chemistry, Waste disposal & cleaning technology, Plastics, Conveying, lifting & feeding technology, Textile, Printing & Paper, Vehicle construction, Metal & Toolmaking

Customizing Options

- optional item modification (on request): other lengths, other nominal widths, with customer-specific imprint, flame retardant

Article Variants

Extended Article Number	Article number	Nominal Size (DN) mm	Outer diameter mm	Bending radius* mm	Weight kg/m	Operating pressure bar	Negative pressure bar	Max. Production length m	Stock Lengths m
000236:25:x	000236	25	30	30	0.24	1.06	0.79	25.00	/
000236:26:x	000236	26	31	31	0.24	1.06	0.79	25.00	5, 10
000236:32:x	000236	32	40	40	0.34	0.83	0.71	25.00	5, 10
000236:38:x	000236	38	46	46	0.37	0.69	0.66	25.00	5, 10, 15
000236:40:x	000236	40	48	48	0.38	0.69	0.66	25.00	5, 10
000236:45:x	000236	45	53	53	0.40	0.61	0.59	25.00	/
000236:50:x	000236	50	56	56	0.43	0.55	0.52	25.00	/
000236:51:x	000236	51	58	58	0.43	0.55	0.52	25.00	5, 10, 15
000236:55:x	000236	55	63	63	0.49	0.51	0.44	25.00	/
000236:60:x	000236	60	68	68	0.51	0.46	0.44	25.00	5, 10, 15
000236:65:x	000236	65	73	73	0.62	0.42	0.37	25.00	5, 10
000236:70:x	000236	70	78	78	0.65	0.37	0.37	25.00	5, 10
000236:75:x	000236	75	83	83	0.68	0.37	0.29	25.00	/
000236:76:x	000236	76	84	84	0.69	0.37	0.29	25.00	5, 10
000236:80:x	000236	80	88	88	0.73	0.32	0.29	25.00	5, 10
000236:90:x	000236	90	99	99	0.85	0.28	0.22	25.00	5, 10
000236:100:x	000236	100	108	108	0.90	0.28	0.22	25.00	/
000236:102:x	000236	102	110	110	0.91	0.28	0.22	25.00	5, 10
000236:110:x	000236	110	119	119	0.99	0.23	0.22	25.00	/
000236:115:x	000236	115	124	124	1.02	0.23	0.22	25.00	/
000236:120:x	000236	120	129	129	1.06	0.23	0.22	25.00	/
000236:125:x	000236	125	133	133	1.11	0.23	0.22	25.00	/
000236:127:x	000236	127	135	135	1.13	0.23	0.22	25.00	/
000236:130:x	000236	130	139	139	1.15	0.19	0.22	25.00	/
000236:140:x	000236	140	149	149	1.33	0.19	0.15	25.00	/
000236:150:x	000236	150	159	159	1.41	0.19	0.15	25.00	/
000236:152:x	000236	152	161	161	1.42	0.19	0.15	25.00	5, 10

Extended Article Number	Article number	Nominal Size (DN) mm	Outer diameter mm	Bending radius* mm	Weight kg/m	Operating pressure bar	Negative pressure bar	Max. Production length m	Stock Lengths m
000236:160:x	000236	160	170	170	1.67	0.19	0.15	25.00	/
000236:170:x	000236	170	180	180	1.73	0.14	0.15	25.00	/
000236:175:x	000236	175	185	185	1.78	0.14	0.15	25.00	/
000236:180:x	000236	180	190	190	1.52	0.14	0.15	25.00	5, 10
000236:200:x	000236	200	211	211	2.12	0.14	0.15	25.00	/
000236:203:x	000236	203	214	214	2.21	0.14	0.15	25.00	5, 10
000236:225:x	000236	225	235	235	2.45	0.09	0.07	25.00	/
000236:250:x	000236	250	257	257	2.85	0.09	0.07	25.00	/
000236:254:x	000236	254	260	260	2.90	0.09	0.07	25.00	/
000236:275:x	000236	275	284	284	2.99	0.09	0.07	25.00	/
000236:280:x	000236	280	290	290	3.01	0.09	0.07	25.00	/
000236:300:x	000236	300	310	310	3.07	0.08	0.07	20.00	/
000236:315:x	000236	315	325	325	3.11	0.08	0.07	20.00	/
000236:325:x	000236	325	335	335	3.26	0.08	0.07	20.00	/
000236:350:x	000236	350	360	360	3.46	0.04	0.07	20.00	/
000236:375:x	000236	375	385	385	3.87	0.04	0.05	20.00	/
000236:400:x	000236	400	411	410	4.27	0.04	0.05	20.00	/
000236:450:x	000236	450	461	460	4.86	0.04	0.05	20.00	/
000236:500:x	000236	500	511	510	5.47	0.04	0.05	20.00	/

All data refer to a medium and ambient temperature of +20°C.

Specification of the bending radius related to the inside of the hose bend

Subject to technical changes and colour deviations

Delivery Variants

Available in other lengths, other nominal diameters, with customer-specific customer-specific imprint.

Disposal instructions

After use, the product must be disposed of in accordance with the legal regulations applicable in the user's region (in Germany in accordance with the applicable Waste Catalogue Ordinance (AVV)).

Possible Connection Elements



Hose connector
Sheet steel connector for extending, connecting and joining light to medium-weight hoses



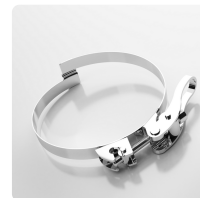
Hose Reducer, symmetrical
Hose reducer for extending, connecting and joining light to medium weight hoses



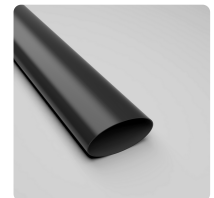
Master-Grip Hose Clamp, screwable
Special clamp for fastening light and medium-weight, right-handed spiral hoses such as Flamex B-se, Flamex B-F se, Master-PUR Trivolution, Master-PVC and Master-SANTO



Master-Grip Hose Clamp, screwable, Steel quality W4, stainless steel 1.4301
Special clamp for fastening light and medium-weight, right-handed spiral hoses such as Flamex B-se, Flamex B-F se, Master-PUR Trivolution, Master-PVC and Master-SANTO



Master-Grip Quick-Fix Clamp
Special clamp for fastening light and medium-weight, right-handed spiral hoses such as Flamex B-se, Flamex B-F se, Master-PUR Trivolution, Master-PVC and Master-SANTO



Heat Shrink Cuff
Heat shrink sleeve for easy connection and sealing of hoses

Individual consultation

We offer consultation by
phone:
+49 209 97077-112

Product requests via
[masterflex.de/en](https://www.masterflex.de/en)

Address Headquarters

Masterflex SE
Willy-Brandt-Allee 300
45981 Gelsenkirchen

