

## Master-PUR Performance

Article Master No.: 000210

PU suction hose & transport hose, extremely abrasion-resistant & vacuum-proof, seamless smooth inner lining, antistatic and microbe-resistant



antistatic



microbe resistant



moderately flexible



heavy



very pressure resistant

### Product Details

#### Construction / Material

- Type of construction: profile extruded hose with metal spiral
- Spiral Design: made of steel wire
- Material of the spiral: spring steel
- Execution of the wall: made of highly abrasion-resistant material, made of pure material, made of specified material, addition of a non-migrating permanent antistatic agent, wall thickness approx. 2.5 mm
- Specifications of the wall: surface resistance  $R_0 < 10^9$  Ohm, measured according to DIN EN ISO 8031
- Material of the inner layer: Polyether Polyurethane
- Specifications of the inner layer: extremely abrasion-resistant, super-strong inliner made of polyurethane 60° Shore A
- Material of the outer layer: Polyester Polyurethane

#### Properties

- Specifications of the product: according to TRGS 727 and ATEX 2014/34 EU
- Chemical Properties: microbe-resistant, halogen-free, good resistance to chemicals, good UV resistance, good resistance to oil, good resistance to petrol, good ozone resistance, plasticiser-free
- Flexibility: moderately flexible
- Physical Properties: permanently antistatic

- **Weight:** heavy
- **Pressure Resistance:** very pressure resistant
- **Colour:** colour of the interior wall
- **Other:** high vacuum and good pressure resistance, particularly smooth on the inside, configurable as a hose system with digital interface for compatibility with the AMPIUS® app

### Operating Temperature

- **Temperature Range:** -40 - 90
- **short-term maximum temperature:** peaks to 125 °C

### Delivery Information

- **Delivery, type of production:** various nominal widths in standard lengths are available ex-production, individual nominal widths and lengths also ex-stock

### Application Areas

- **Areas of application:** Agriculture, Automotive, Plant & Mechanical Engineering, Industry, Semiconductor Industry, Ventilation & Air-conditioning, Bulk & Construction, Chemistry, Food & Pharma, Waste Disposal & Cleaning Technology, Plastics, Conveying, lifting & feeding technology, Textile, Printing & Paper, Metal & Toolmaking

### Customizing Options

- **optional item modification (on request):** other colours, other lengths, other nominal widths, with customer-specific imprint

## Article Variants

Extended Article Number	Article number	Nominal Size (DN) mm	Outer diameter mm	Bending radius* mm	Weight kg/m	Operating pressure bar	Negative pressure bar	Max. Production length m	Stock Lengths m
000210:38:x	000210	38	50	130	0.80	4.35	0.94	20.00	2.50, 5, 7.50, 10, 15, 20
000210:40:x	000210	40	52	135	0.80	4.25	0.94	20.00	2.50, 5, 7.50, 10, 15, 20
000210:45:x	000210	45	57	155	1.00	4.12	0.94	20.00	2.50, 5, 7.50, 10, 15, 20
000210:51:x	000210	51	66	170	1.20	4.00	0.94	20.00	2.50, 5, 7.50, 10, 15, 20
000210:55:x	000210	55	72	175	1.30	3.80	0.94	20.00	2.50, 5, 7.50, 10, 15, 20
000210:60:x	000210	60	77	185	1.50	3.70	0.94	20.00	2.50, 5, 7.50, 10, 15, 20
000210:65:x	000210	65	82	190	1.60	3.50	0.94	20.00	2.50, 5, 7.50, 10, 20
000210:76:x	000210	76	93	250	1.90	3.15	0.94	20.00	2.50, 5, 7.50, 10, 15, 20
000210:80:x	000210	80	97	270	2.10	2.90	0.94	20.00	2.50, 5, 7.50, 10, 15, 20
000210:90:x	000210	90	107	285	2.40	2.70	0.94	20.00	2.50, 5, 7.50, 10, 20
000210:102:x	000210	102	119	300	2.60	2.50	0.94	20.00	2.50, 5, 7.50, 10, 20

Extended Article Number	Article number	Nominal Size (DN) mm	Outer diameter mm	Bending radius* mm	Weight kg/m	Operating pressure bar	Negative pressure bar	Max. Production length m	Stock Lengths m
000210:115:x	000210	115	132	325	3.00	2.30	0.94	15.00	/
000210:127:x	000210	127	144	350	3.30	2.00	0.94	15.00	2.50, 5, 7.50, 10, 15
000210:140:x	000210	140	154	370	3.46	1.80	0.94	15.00	2.50, 5, 7.50, 10
000210:152:x	000210	152	169	400	3.70	1.50	0.94	15.00	2.50, 5, 7.50, 10, 15
000210:175:x	000210	175	190	770	4.60	1.10	0.70	10.00	/
000210:180:x	000210	180	195	780	4.70	1.00	0.68	10.00	/
000210:200:x	000210	200	215	840	5.00	0.80	0.55	10.00	/
000210:203:x	000210	203	215	840	5.00	0.88	0.55	10.00	/
000210:250:x	000210	250	268	1500	7,2	0,5	0,3	10.00	/

All data refer to a medium and ambient temperature of +20°C.

Specification of the bending radius related to the inside of the hose bend

Subject to technical changes and colour deviations

## Delivery Variants

Available in other lengths, other nominal diameters, with customer-specific customer-specific imprint.

## Disposal instructions

After use, the product must be disposed of in accordance with the legal regulations applicable in the user's region (in Germany in accordance with the applicable Waste Catalogue Ordinance (AVV)).

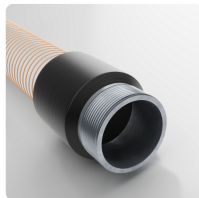
## Possible Connection Elements



**Hose Clamp with Bolts**  
special clamp for fastening medium and heavy spiral hoses to connection pipes on mobile and stationary units



**Hose Clamp with Bolts, Steel quality W4, stainless steel 1.4301**  
Special clamp for fastening medium and heavy spiral hoses to connection pipes on mobile and stationary units



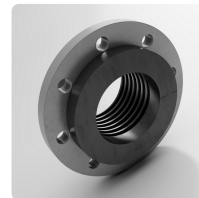
**Combiflex Metal Threaded Sockets**  
Cast-on threaded connection with external thread according to DIN ISO 228



**Combiflex PU Fixed Flange**  
screw-on plastic flange for Master-PUR L, Master-PUR H, Master-PUR HX and Master-PUR Performance, for counterflanges according to DIN 2632 / DIN 2633 / DIN 2673



**Combiflex PU Threaded Sockets**  
PU threaded connector for all Master-PUR L, Master-PUR H and Master-PUR HX hose types, based on DIN ISO 228



**Combiflex PU Swivel Flange**  
screw-on plastic collar with loose flange for Master-PUR L, Master-PUR H, Master-PUR HX and Master-PUR Performance, for counterflanges acc. to DIN 2632 / DIN 2633 / DIN 2673

### Individual consultation

We offer consultation by phone:  
+49 209 97077-112

Product requests via  
[masterflex.de/en](http://masterflex.de/en)

### Address Headquarters

Masterflex SE  
Willy-Brandt-Allee 300  
45981 Gelsenkirchen

